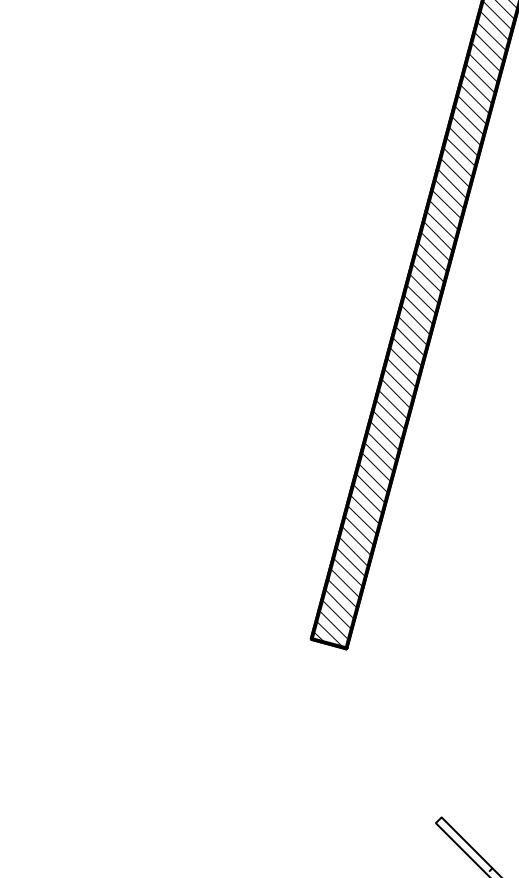
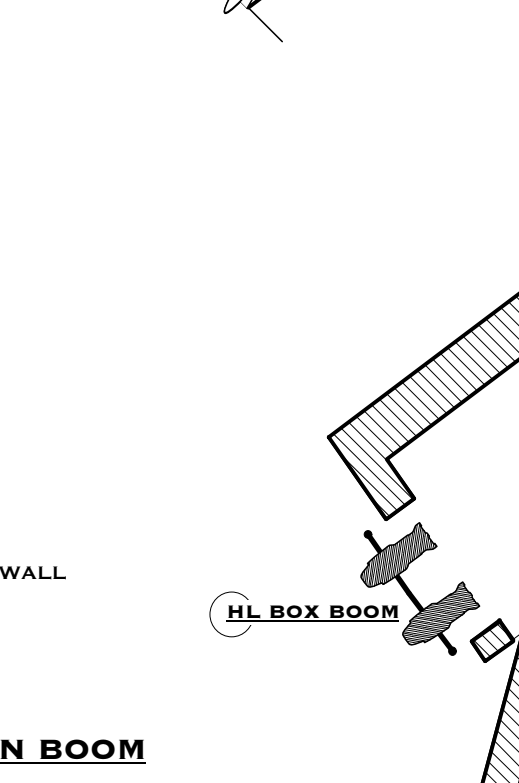


DESCRIPTION	D TO PL	TRIM #
7th ELECTRIC	+28'-0"	47
6th ELECTRIC	+27'-3"	45
5th ELECTRIC	+26'-6"	44
4th ELECTRIC	+25'-9"	43
3rd ELECTRIC	+25'-0"	42
2nd ELECTRIC	+24'-3"	41
1st ELECTRIC	+23'-6"	40
	+22'-9"	39
	+22'-0"	38
	+21'-3"	37
	+20'-6"	36
	+19'-9"	35
	+19'-0"	34
FOCUS TRACK SPACE	+18'-0"	33
FOCUS TRACK SPACE	+17'-3"	32
5th ELECTRIC	+16'-6"	31
FOCUS TRACK SPACE	+15'-9"	30
FOCUS TRACK SPACE	+15'-0"	29
4th ELECTRIC	+14'-3"	28
FOCUS TRACK SPACE	+13'-6"	27
	+12'-9"	26
	+12'-0"	25
	+11'-3"	24
	+10'-6"	23
US HEADER	+10'-0"	22
PC BORDER	+9'-3"	21
	+8'-6"	20
	+8'-0"	19
	+7'-3"	18
	+6'-6"	17
	+6'-0"	16
	+5'-3"	15
	+4'-6"	14
	+4'-0"	13
	+3'-3"	12
	+2'-6"	11
	+2'-0"	10
	+1'-3"	9
	+0'-6"	8
	+0'-0"	7
	-0'-6"	6
	-0'-12"	5
	-0'-18"	4
	-0'-24"	3
	-0'-30"	2
	-0'-36"	1
	-0'-42"	1

**LX BRIDGE 2**  
+28'-0"

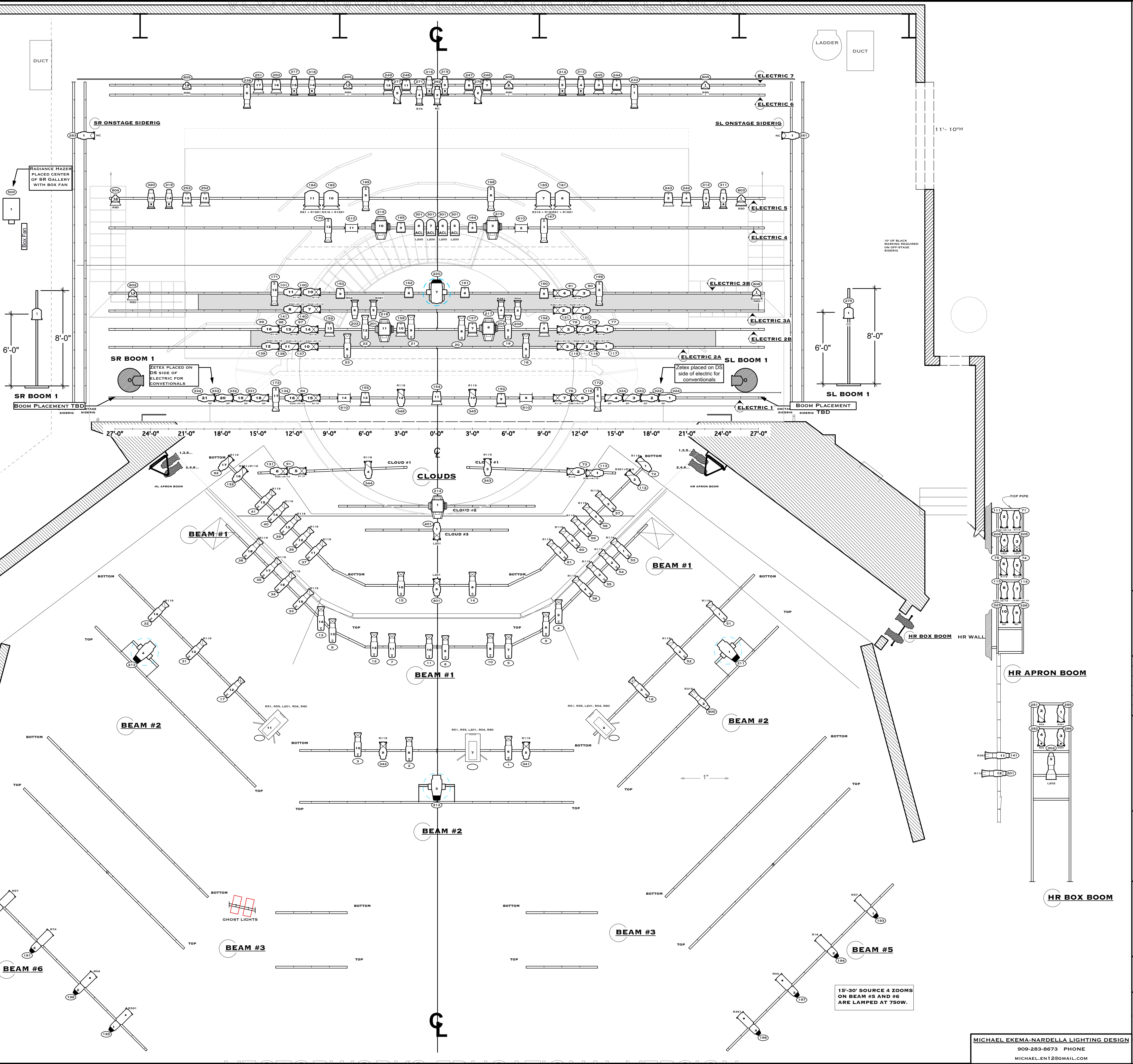
**LX BRIDGE 1**  
+24'-4"

SR BOOM 1  
BOOM PLACEMENT TBD



**NOTES**

- ALL UNIT HUNG ON 1" CENTER UNLESS OTHERWISE NOTED.
- PROVIDE SPARE CIRCUITS AT ALL LOCATIONS.
- DISCUSS ALL UNITS MOUNTED ON SCENERY.
- HANG ALL UNITS AND PRE-ROTATE PARS AXES IN ORIENTATION AS SHOWN.
- NOTE CLEARANCE FOR ALL AUTOMATED UNITS.
- ALL ELECTRIC TRIMS ARE TAKEN FROM SHOW DECK TO PIPE.
- ALL BORDER TRIMS ARE FROM SHOW DECK TO BOTTOM OF GOODS.
- ALL TRIMS ARE SUBJECT TO CHANGE IN THE THEATER.
- BOOM MEASUREMENTS ARE TAKEN TO THE BOOM PIPE, NOT THE INSTRUMENTS.
- PROVIDE EXTRA R-132 AND OTHER FROSTS DURING FOCUS.
- ALL MOVING LIGHT FIXTURES SHOULD BE SET TO EXTENDED MODE.
- LIGHTS SHOULD BE SET TO 10 CHANNEL MODE. CHROMA-Q SHOULD BE SET TO 4 CHANNEL MODE. ARENA PARS SHOULD BE SET TO 7 CHANNEL MODE.
- LIGHTING BRIDGE 2 CAN BE ACCESSSED THROUGH WIREROPE LADDER.
- ZETEX (FIRE RAG) PLACED DS OF CONVENTIONALS ON 1ST ELECTRIC



**KEY**

- ETC SOURCE 4 10°, 575W
- ETC SOURCE 4 14°, 575W
- ETC SOURCE 4 19°, 575W
- ETC SOURCE 4 26°, 575W
- ETC SOURCE 4 36°, 575W
- ETC SOURCE 4 50°, 575W
- ETC SOURCE 4 70°, 575W
- ETC SOURCE 4 90°, 575W
- ETC SOURCE 4 LED S2 Lustr 19°, 171W
- ETC SOURCE 4 LED S2 Lustr 26°, 171W
- ETC SOURCE 4 LED S2 Lustr 36°, 171W
- ETC SOURCE 4 LED S2 Lustr 50°, 171W
- ETC SOURCE 4 LED S2 Lustr 90°, 171W
- ETC SOURCE 4 PAR WFL 575W
- ELATION ARENA PAR ZOOM 220W
- STRAND STUDIO 5K FRESNEL, 5KW
- DESISTI 2K FRESNEL, 2KW
- PAR 64 ACL, 1KW
- ALTMAN Q-LIGHT, 1KW
- CHROMA-Q COLORFORCE II 12 RGBA, 133W
- LEE COLORTAN BROAD LIGHT, 1KW
- SOLAFRAME 2000 550W
- VL1100-AS 1KW
- VL 3500 SPOT 1.2KW
- LYCIAN SUPERARC 400W

**LEGEND**

- UNIT 1 (CHANNEL)
- UNIT 2 (CHANNEL)
- UNIT 3 (CHANNEL)
- UNIT 4 (CHANNEL)
- UNIT 5 (CHANNEL)
- UNIT 6 (CHANNEL)
- UNIT 7 (CHANNEL)
- UNIT 8 (CHANNEL)
- UNIT 9 (CHANNEL)
- UNIT 10 (CHANNEL)
- UNIT 11 (CHANNEL)
- UNIT 12 (CHANNEL)
- UNIT 13 (CHANNEL)
- UNIT 14 (CHANNEL)
- UNIT 15 (CHANNEL)
- UNIT 16 (CHANNEL)
- UNIT 17 (CHANNEL)
- UNIT 18 (CHANNEL)
- UNIT 19 (CHANNEL)
- UNIT 20 (CHANNEL)
- UNIT 21 (CHANNEL)
- UNIT 22 (CHANNEL)
- UNIT 23 (CHANNEL)
- UNIT 24 (CHANNEL)
- UNIT 25 (CHANNEL)
- UNIT 26 (CHANNEL)
- UNIT 27 (CHANNEL)
- UNIT 28 (CHANNEL)
- UNIT 29 (CHANNEL)
- UNIT 30 (CHANNEL)
- UNIT 31 (CHANNEL)
- UNIT 32 (CHANNEL)
- UNIT 33 (CHANNEL)
- UNIT 34 (CHANNEL)
- UNIT 35 (CHANNEL)
- UNIT 36 (CHANNEL)
- UNIT 37 (CHANNEL)
- UNIT 38 (CHANNEL)
- UNIT 39 (CHANNEL)
- UNIT 40 (CHANNEL)
- UNIT 41 (CHANNEL)
- UNIT 42 (CHANNEL)
- UNIT 43 (CHANNEL)
- UNIT 44 (CHANNEL)
- UNIT 45 (CHANNEL)
- UNIT 46 (CHANNEL)
- UNIT 47 (CHANNEL)
- UNIT 48 (CHANNEL)
- UNIT 49 (CHANNEL)
- UNIT 50 (CHANNEL)
- UNIT 51 (CHANNEL)
- UNIT 52 (CHANNEL)
- UNIT 53 (CHANNEL)
- UNIT 54 (CHANNEL)
- UNIT 55 (CHANNEL)
- UNIT 56 (CHANNEL)
- UNIT 57 (CHANNEL)
- UNIT 58 (CHANNEL)
- UNIT 59 (CHANNEL)
- UNIT 60 (CHANNEL)
- UNIT 61 (CHANNEL)
- UNIT 62 (CHANNEL)
- UNIT 63 (CHANNEL)
- UNIT 64 (CHANNEL)
- UNIT 65 (CHANNEL)
- UNIT 66 (CHANNEL)
- UNIT 67 (CHANNEL)
- UNIT 68 (CHANNEL)
- UNIT 69 (CHANNEL)
- UNIT 70 (CHANNEL)
- UNIT 71 (CHANNEL)
- UNIT 72 (CHANNEL)
- UNIT 73 (CHANNEL)
- UNIT 74 (CHANNEL)
- UNIT 75 (CHANNEL)
- UNIT 76 (CHANNEL)
- UNIT 77 (CHANNEL)
- UNIT 78 (CHANNEL)
- UNIT 79 (CHANNEL)
- UNIT 80 (CHANNEL)
- UNIT 81 (CHANNEL)
- UNIT 82 (CHANNEL)
- UNIT 83 (CHANNEL)
- UNIT 84 (CHANNEL)
- UNIT 85 (CHANNEL)
- UNIT 86 (CHANNEL)
- UNIT 87 (CHANNEL)
- UNIT 88 (CHANNEL)
- UNIT 89 (CHANNEL)
- UNIT 90 (CHANNEL)
- UNIT 91 (CHANNEL)
- UNIT 92 (CHANNEL)
- UNIT 93 (CHANNEL)
- UNIT 94 (CHANNEL)
- UNIT 95 (CHANNEL)
- UNIT 96 (CHANNEL)
- UNIT 97 (CHANNEL)
- UNIT 98 (CHANNEL)
- UNIT 99 (CHANNEL)
- UNIT 100 (CHANNEL)

**DRAWING SCHEDULE**

VER.	DATE	DESCRIPTION
1	10/15/18	PRELIM
2	10/22/18	FINAL PLOT
3	10/29/18	FINAL PLOT EDITS
4	11/05/18	SHOW PLOT

THIS DRAWING REPRESENTS VISUAL CONCEPTS AND CONSTRUCTION SUGGESTIONS ONLY.

IT DOES NOT REPLACE THE KNOWLEDGE AND ADVICE OF A LICENSED STRUCTURAL ENGINEER. THE DESIGNER IS UNQUALIFIED TO DETERMINE THE STRUCTURAL OR ELECTRICAL APPROPRIATENESS OF THIS DESIGN, AND WILL NOT ASSUME RESPONSIBILITY FOR IMPROPER ENGINEERING, CONSTRUCTION, HANDLING, OR USE OF EQUIPMENT.

ALL MATERIALS AND CONSTRUCTION MUST COMPLY WITH THE MOST STRINGENT APPLICABLE FEDERAL AND LOCAL FIRE, SAFETY, ENERGY, AND ENVIRONMENTAL CODES.

**PRODUCED BY**

CMC

DIRECTOR: VINCE DEGEORGE  
 SCENERY BY: MARK HALPIN  
 COSTUMES BY: BRANDON SHEPARD  
 LIGHTING BY: MICHAEL EKEMA-NARDELLA  
 ALB1: ELANOR EBERHARDT  
 ALD2: ANDREW STEWART

MASTER ELECTRICIAN: AMY MELIA  
 TECHNICAL DIRECTOR: STEVE MILLER

**TURN OF THE PATRICIA CORBETT THEATER CINCINNATI, OH**

**LIGHT PLOT**

SCALE: 1/4"=1'-0"

DATE: 11/5/18

DRAWN BY: MEN

1 OF 3

MICHAEL EKEMA-NARDELLA LIGHTING DESIGN  
 909-283-8673 PHONE  
 MICHAEL.EN12@GMAIL.COM